



YOUR GUIDE TO

Creating a Landscape

THAT WORKS FOR YOU!



Have you been hitting roadblocks during your landscaping design and construction process? Or maybe you're still stuck at the initial phase where you're unsure how to begin?

Whatever challenge you're facing, our landscaping tips are designed to provide solutions to your problems - helping identify the issue and deliver doable answers with simple steps.



Landscaping Tips to Enhance Your Outdoor Living Area

1. Plan Your Design

The first step? A realistic and achievable plan.

Start by defining your goals. Do you want a serene garden, a space for family gatherings, or a combination of different features? Your objectives will shape every decision you make along the way.

Finalise your vision, narrowing down the main concept to craft a preliminary plan. This will provide clarity, giving you a direction and a place to start.



New Build, Revamp or Update?

- **A new build gives you a fresh canvas, making layout planning easier.** Divide your landscape into sections if you have a larger space. For smaller areas, focus on what you want most, such as a lawn, vegetable garden, play area or a relaxing nook.
- **If you're renovating, ask yourself why.** Does your yard look rundown, or do you want to enhance your property's curb appeal? Maybe your kids have flown the coup, and you want more space for an outdoor workspace or would like to add more gardening space.
- **List down your reasons and what you want.** Integrate the elements you want, whether practical or aesthetic. Cross out or leave the ones that can wait until you have all the necessary features in the plan.
- **For landscaping updates, apply the same concept.** While at it, think about practical aspects like low maintenance that lower costs and make your landscape thrive all year round.
- **Irrigation systems, hardscaping and hardy and local plants** can make your landscape look great and reduce the time and money spent on maintenance.





2. Adopt a Step-by-Step Approach

There's always a larger picture of what you want in our landscape. However, having the final vision does not tell us how to get there. Tackling your landscape by breaking down the design into manageable steps makes it more achievable. It allows for creative flexibility, ensuring your landscape has a solid foundation that can be built according to your plan and budget.

Get it Right!

- **Focus on the main layout first**, incorporating all your main ideas and creating the structure, such as the soft and hard landscaping and setting play and dining areas aside.
- **Develop a foundational sketch** that outlines primary elements like pathways and focal points.
- **Gradually introduce core features**, such as plant beds and water elements, before going into finer details like lighting and components.
- Complete the process by adding flowers and plants for a vibrant touch.



3. Assess Your Outdoor Space

Do you have a flat terrain or a slope? Does your property look traditional, modern or a mix of both? Cohesiveness and a balanced blend of everything available are what make a landscape timeless. Understand these nuances, from the subtle details like colours, shading, natural and built elements to the overall look to create an outdoor space that flows into how you want it to look.



Make the Most of Your Outdoor Space!

- **Conduct a comprehensive analysis of your outdoor area**, taking note of its dimensions, existing structures, and natural elements.
- **Hanging or tall plants and tiered structures** can beautify a small space without looking overcrowded – just go vertical if you don't have a large area.
- **Pay attention to sunlight patterns and potential shade areas** to plan for plants and flora.
- **Make a note of slopes and plan for drainage accordingly** to prevent damage to your property and landscape during the rainy season.
- **Highlight natural features** such as slopes, trees, and terrain and design around them to your advantage.



4. Define a Colour Palette

Bring your design together by defining a colour palette that goes with your design. From the plants to the focal points, each colour will add dimension to your landscape. Assess the existing colours in your landscape, considering elements like your home's exterior, existing plants, and any hardscape features. Take note of predominant colours and the overall aesthetic of your outdoor space.

Focus on How All the Colours Go Together!

- **Collect paint swatches or small plant samples to place in your landscape.** Observe them at different times of the day to gauge their appearance in various lighting conditions.
- **Create visual interest** by strategically pairing plants with varying colours, textures, and heights.
- **Place low-growing plants in front of taller ones** to add depth and choose complementary colour schemes for a cohesive look.
- **Introduce pops of colour through accessories** like cushions, outdoor furniture, or decorative containers.

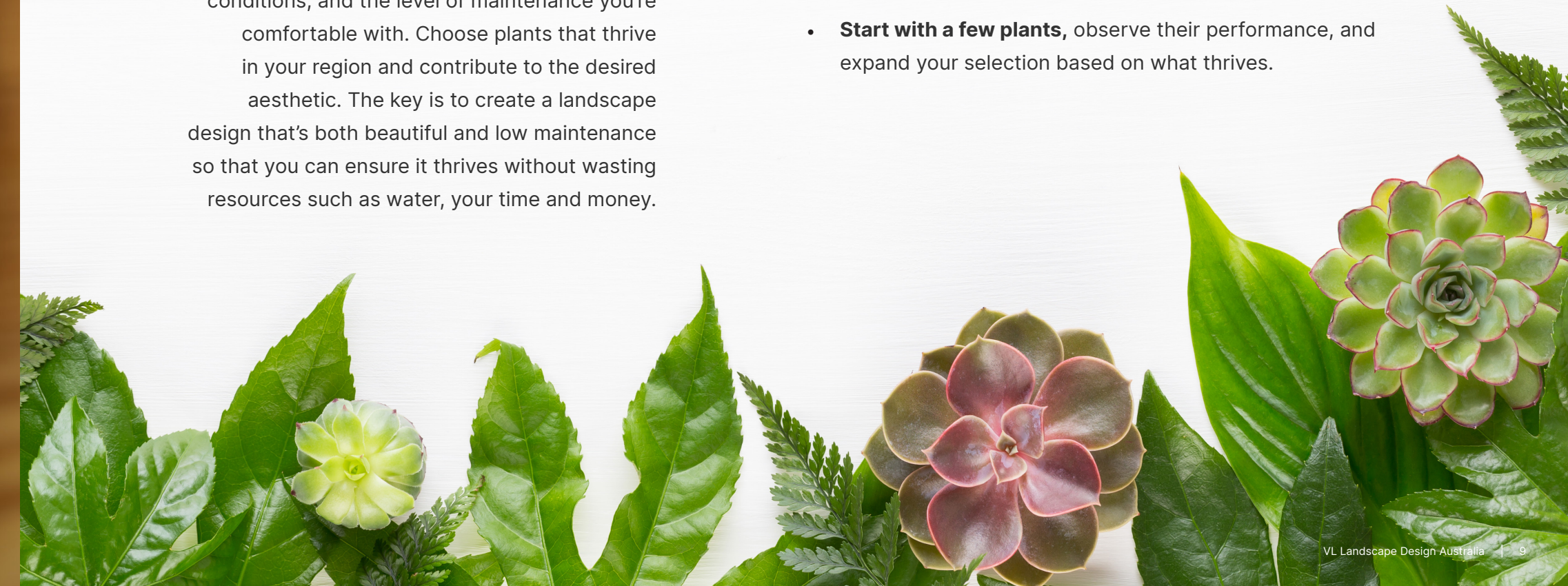


5. Plants Selection

Delve into the specifics of plant and material selection by considering your local climate, soil conditions, and the level of maintenance you're comfortable with. Choose plants that thrive in your region and contribute to the desired aesthetic. The key is to create a landscape design that's both beautiful and low maintenance so that you can ensure it thrives without wasting resources such as water, your time and money.

Plants Complete a Landscape

- **Consider sustainable plants and planning seasonally** so your landscape looks great all year round.
- **Opt for a mix of plants** that bloom or change colours during different times of the year to add character and beauty.
- **Test your soil's pH and texture.** Select plants that match these conditions or amend the soil as needed.
- **Choose drought-tolerant plants** for areas with limited water availability and moisture-loving ones for well-irrigated spots.
- **Start with a few plants**, observe their performance, and expand your selection based on what thrives.





6. Budgeting and Materials

Determine a practical budget that reflects your financial capacity and aligns with the scope of your landscaping goals. Consider all potential expenses, including materials, labour, and maintenance. A clear budget from the outset helps streamline the decision-making process and ensures your project remains financially sustainable. It can be tempting to go all out and try to execute your complete plan all at once. However, this can go over budget, leaving you with a half-finished landscape with no specific deadline for when you can complete it.

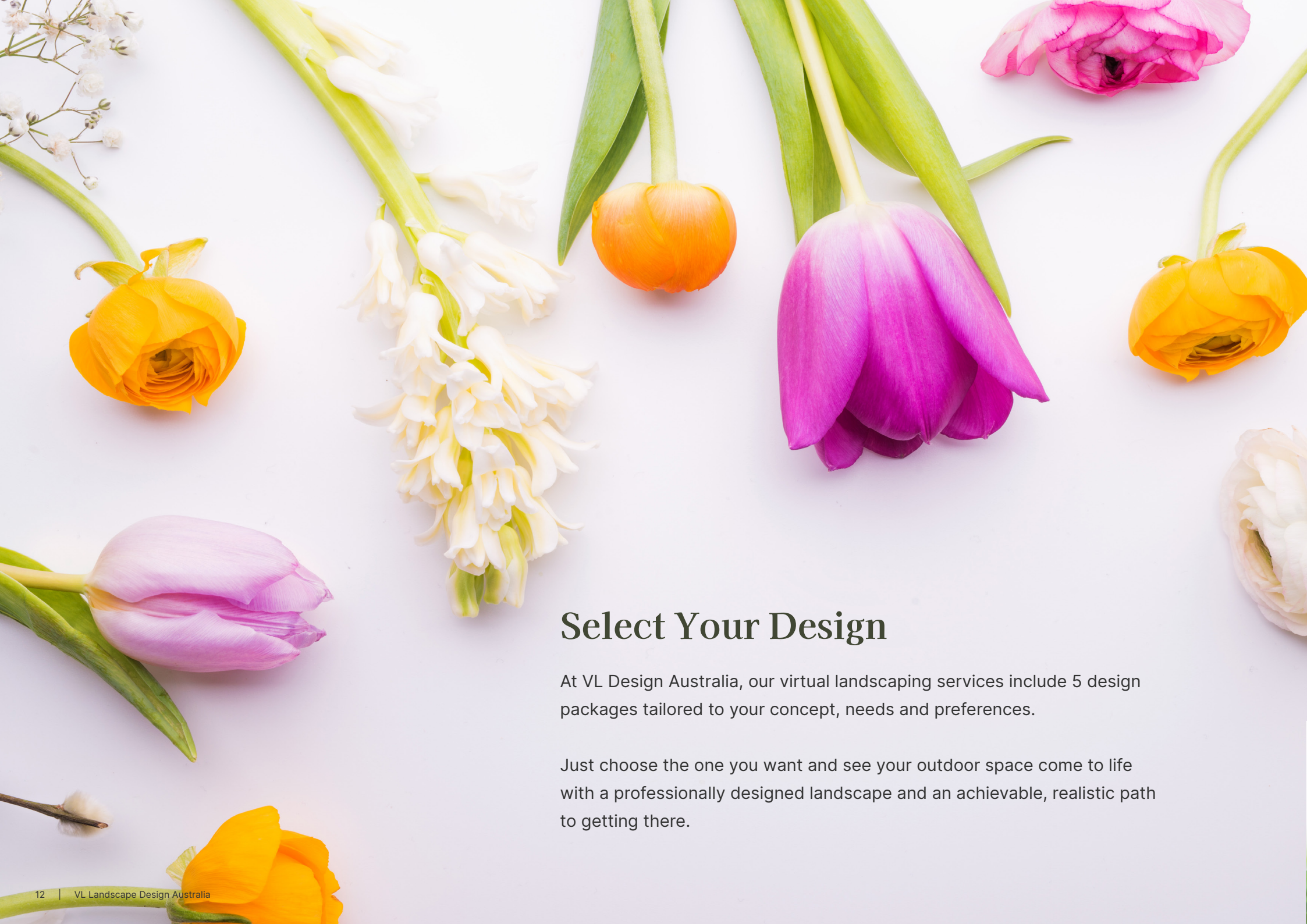


Let's Make it Achievable!

- **Focus on your needs before moving on to what you want.** This way, you have the necessities covered first, allowing you the flexibility to add the extras gradually.
- **Experiment with different materials.** More expensive doesn't necessarily mean prettier or more durable. For example, using synthetic turf instead of natural grass in less visible areas, wood-look alternatives such as compost decking or stamped concrete for paving.
- **Prioritise materials for focal points and high-traffic areas,** allocating most of your budget there.
- **Plan your project comprehensively** and purchase materials like mulch, gravel, or pavers in bulk to benefit from discounts.

Pro Tip:

Don't focus only on the aesthetics. Instead, **plan your landscape according to your lifestyle**, making it practical and sustainable so you can enjoy and maintain it without stressing over it. Utilise the 2D and 3D renders to digitally view your landscape before construction, eliminating guesswork, making revisions easier and streamlining budgeting.



Select Your Design

At VL Design Australia, our virtual landscaping services include 5 design packages tailored to your concept, needs and preferences.

Just choose the one you want and see your outdoor space come to life with a professionally designed landscape and an achievable, realistic path to getting there.



Street Appeal



Front Yard



Backyard



Whole Yard



Delux



vldesignaustralia.com.au